



NERVOUS WATERS
A HIGHER FORM OF FISHING

KARANDÁ LODGE

BELLA VISTA, CORRIENTES, ARGENTINA





Karandá Lodge welcomes its guests to a high-end riverfront lodge in the charming and picturesque town of Bella Vista, set along the Middle Paraná River.

KARANDÁ LODGE

In the chase of migration

Karandá brings together Argentina's most renowned outfitter, Nervous Waters, and some of the world's finest Golden Dorado guides. Set along the middle section of the Río Paraná—South America's second-longest river and watershed—this subtropical winter and spring fishery, running from June through December, coincides with the peak of the river's legendary Dorado migration.

Each year, the arrival of vast schools of sábalo brings the season to life. Aggressive Dorado feed heavily on the baitfish, reaching impressive sizes of 10 to 25+ pounds. After five full years of scouting and exploration, our guides have developed a deep understanding of the habits, holding water, and seasonal movements of these powerful and complex fish.

Golden Dorado are the primary target species. Guests can sight-fish to Dorado cruising long sandbars, explore remote backwater creeks, and work a wide range of productive water—from woody structure and cut banks to deep channels and current seams.

WHY CHOOSE KARANDÁ LODGE?

- Fish with one of the finest Golden Dorado guiding teams in Argentina.
- Strategically located on the Middle Paraná, where the bulk of the sábalo migration takes place.
- Dorado are our specialty—offering a strong chance of landing the fish of a lifetime.
- In addition to Dorado, target the “freshwater permit,” the Pacú. These omnivorous fish eagerly take fruit-pattern flies and streamers, providing exciting action on lighter tackle when Dorado are less active.
- Fish from custom-designed, comfortable skiffs built specifically for the Paraná River.
- Dual casting platforms allow anglers to fish safely and simultaneously.
- Sandbar Fishing: Sight-cast to aggressive Dorado in shallow water along the Paraná’s legendary sandbar flats—arguably one of the most challenging and rewarding freshwater experiences.
- Experience the warm hospitality, stunning landscapes, and abundant wildlife of Corrientes Province. The Paraná River is also considered one of the world’s premier bird-watching destinations.
- High-quality loaner fly and conventional tackle available.
- Simple, seamless logistics to and from Buenos Aires.
- Cast & Blast: Our season aligns perfectly with world-class wingshooting opportunities with David Denies.
- Best-in-class accommodations and service—hallmarks of the Nervous Waters experience.



Dorado are strikingly beautiful, extremely strong, and they jump like a Tarpon when hooked. All in all, they may claim the prize as the most exciting freshwater gamefish on the planet.



Karandá Lodge welcomes its guests to a high-end riverfront hotel in the charming and picturesque town of Bella Vista, set along the Middle Paraná River.

FACILITIES AND SERVICES

As a Karandá Lodge guest, your comfort, on-and-off the water, is our priority. Accommodations for the duration of your stay will be at a 5-star exclusive lodge overlooking the Paraná River in the riverside haven of Bella Vista, where we have the capacity for up to ten anglers. All room rates are based on shared occupancy, although single rooms are available for a small surcharge.

Hotel amenities include a dining room and “Asado” area, as well as a swimming pool and a fully stocked bar, with beer and top-shelf spirits. Lunch is served during your fishing day on or off the water (depending on weather conditions), and you’ll enjoy breakfast and dinner at the lodge. Savory main courses include traditional Argentine dishes accompanied by top-shelf wines from the renowned Casa Pirque collection. Just be sure to save room for our exquisite desserts.

- Capacity: 10 anglers.
- 5 double rooms with 2 queen size beds each based on shared occupancy.
- Dining room, Bar, Swimming Pool, “Asado” Area.
- Telephone and WIFI availability.
- Typical Argentine dining with Argentina’s famed beef and fine wines, traditional Aasados (BBQs) and delicious desserts.
- Maid and Laundry service.
- Loaner fishing equipment available upon request.



The lodge offers five spacious double rooms, each appointed with two queen-size beds, air conditioning, and a private en-suite bathroom

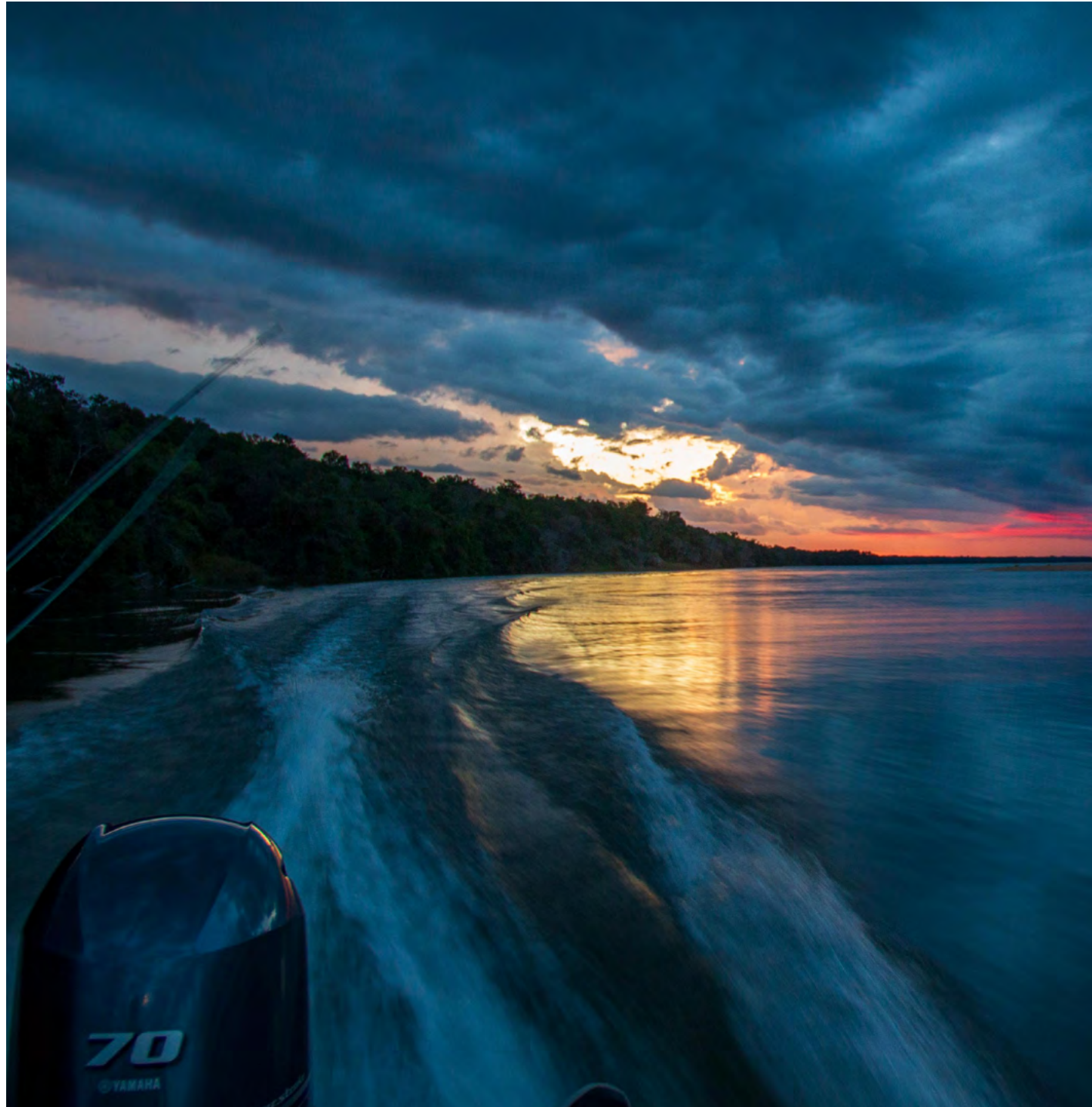


Karandá's menu showcases Argentina's renowned beef and fine wines, complemented by traditional asados, slowly cooked over an open fire.

LOCATION

Karandá Lodge hosts its clients out of a high-end lodge in the small town of picturesque Bella Vista, located on the Middle Paraná River. The river here marks the border between Corrientes and Santa Fé provinces, inside Argentina.

This section of the Paraná flows clearer on the Corrientes side and murkier on the Santa Fe side, both sides fish well depending on fish movement and feeding patterns during the migration. The river is full of beautiful fishy banks, long sandbars, and numerous islands that create deltas and smaller “riachos” (streams).



GETTING THERE

Daily flights are available from Buenos Aires Aeroparque Domestic Airport (AEP) to Corrientes (CNQ) or Resistencia (RES). These 2 neighboring airports are located 25 minutes from each other. It is a 1-hour nonstop flight to either of these airports, from there it's a 75-mile drive to the hotel, a 1.45 to 2 hours' drive.

THE FISHING

Golden Dorado are among the most exciting species an angler can pursue on the fly, known for their aggressive takes, acrobatic jumps, and powerful fights. Karandá is located on a prime stretch of the Paraná River, offering exceptional opportunities to target Dorado throughout our season, from June through December. Sight-fishing is one of the highlights, particularly when Dorado move onto the sandbars to ambush cruising sábalo.

Guests fish primarily from our fleet of newly built, custom 19-foot North Carolina skiffs. These boats feature dual casting decks—one at the bow and one at the stern—allowing two anglers to fish comfortably at the same time. Each skiff is also equipped with a poling platform, ideal for quietly searching for Dorado in shallow sandbank water.

The Paraná River is a structure-rich system, and much of the fishing is done by drifting with trolling motors. This allows guides to cover productive water with precision, from sunken timber and boulder gardens to small bays and side channels. At times, Dorado concentrate on sandbanks, where they corral and attack baitfish. When conditions align, we pole the skiffs or wade these shallow areas, sight-fishing for actively feeding fish.

Generally speaking, we can divide Dorado fishing into two main approaches: blind casting and sight-casting. At Karandá, we do both, depending on weather conditions and where the fish are holding.



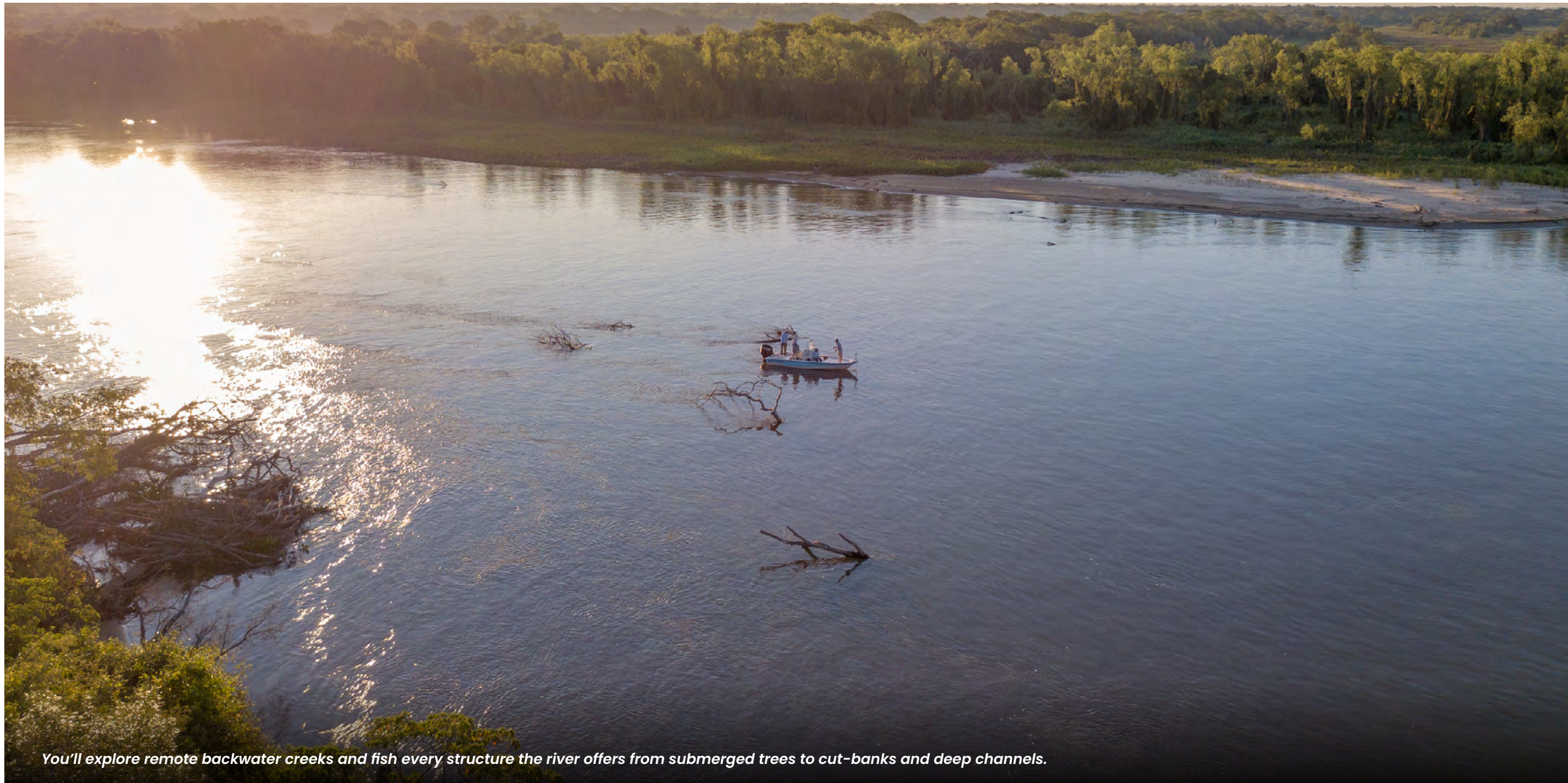
At Karandá, push-poling the shallow flats 'hunting' for dorado is an essential part of the experience. Spotting fish and sight-casting as they ambush sábalo demands precision, patience, and delivers pure adrenaline



Cast large flies on floating lines to dorado along the Paraná's structure-rich islands. These aggressive, baitfish-feeding fish typically weigh 10 to 25+ lbs.



During slower periods for dorado, we often target pacú. These omnivorous fish readily take both streamers and fruit-pattern flies. Reaching up to 20 pounds, they are incredibly fun to catch on lighter tackle, such as 7- or 8-weight rods.



You'll explore remote backwater creeks and fish every structure the river offers from submerged trees to cut-banks and deep channels.

When Dorado are holding along the shorelines of the river and its islands, we usually fish by drifting these edges with two anglers casting simultaneously toward the bank. In these situations, we target a variety of structure—from sunken logs and rocky cover to fast-moving water and slower seams. Most of the time this is blind casting, as we usually cannot see the fish themselves, although we often witness the strikes.

At other times, Dorado are found on the sandbanks. In this section of the middle Paraná, there are a considerable number of sandbanks, and their availability depends greatly on water levels. Some sandbanks “turn on” or “off” as conditions change. When sábalo are present in good numbers, Dorado are often nearby, feeding on them.

When Dorado are found on the sandbanks, it offers one of the most challenging and rewarding experiences in the program. We approach these areas either by wading or by poling quietly from the skiffs. As in saltwater flats fishing, sunlight is essential to spot both sábalo and Dorado cruising in shallow water. When everything comes together, we sight-cast to Dorado moving up onto the sandbanks to feed. These fish are often in a very good size range, and hooking a Dorado in shallow water is an unforgettable experience—they jump violently and regularly take anglers well into the backing.

During the slower hours for Dorado, we often also target Pacú. Pacú are omnivorous and will readily take both streamers and fruit-pattern flies. They can weigh up to 20 pounds and are incredibly fun to catch on lighter tackle, such as 7- or 8-weight rods.



DAILY ITINERARY

Every morning at Karandá Lodge begins with a fresh, hot breakfast. Around 8:00 to 8:30 AM, guests take a short one-minute walk down to the dock, where our custom skiffs await to begin the day's fishing.

We fish through the morning before breaking for lunch. Depending on conditions, we either enjoy a hot meal prepared by your guides along the shores of the Paraná, or return to the lodge for a chef-prepared lunch.

In the afternoon, we head back out on the water and fish through the golden hours until dusk, typically around 6:30 to 7:00 PM. Upon returning to the lodge, guests enjoy aperitifs followed by dinner and drinks.

FLY-FISHING EQUIPMENT

RODS: We recommend 8- to 10-weight rods, ideally between 8 and 9 feet in length, with fast-action performance to handle large flies, windy conditions, and powerful fish.

REELS/LINES:

- We recommend redfish-tapered floating lines or any weight-forward floating line capable of turning over large flies (Jungle series). In many cases, we suggest overlining your rod by one size to improve casting performance with heavier flies. For optimal performance, consider using cold-water lines during the winter months (June through September) and warm-water lines from October through December.
- Intermediate & Sinking lines can also be productive (275 to 350 grains).

LEADER/TIPPET:

- 30 to 70 lbs mono or fluorocarbon (better) for leader and 40 to 65 lbs wire for bite tippet (American Fishing Wire - Model: Surfstrang Micro Supreme, Bare 7x7 Stainless Camo Leader).

FLIES:

- Andino Deceivers or similar (4- to 7-inch streamers tied on 3/0 to 4/0 hooks) and other patterns can be good, depending on the clarity of the water.
- We recommend you buy flies from the guides—they will have what you need, as they tie flies and know the game.





SPINNING & BAIT-CASTING

RODS: Between 1.80 and 2.10mts (5.9 to 6.9 footers); 10- to 20-lbs or 12- to 25-lbs medium- to fast-action rods are needed.

LINES: 40 to 60lbs multifilament

LURES: Rapala Glidins (size 12), Rapala Super Shad Raps (14), and Rapala X Raps. Johnson spoons (between 2 ¾ and 3 ¾ inches) and Abu Atom spoons (9cm 35gr) are also useful, as well as poppers and soft-baits. Argentinean lures made especially for dorado are available, too. We can provide your lures; they will be customized by the guides.



When 'hunting' dorado along island sandbanks, we often use poppers. They are highly effective and trigger aggressive strikes. Watching a large dorado explode on a popper is an experience every angler should have.

RATES 2026

Jun to Dec 2026

7 Nights / 6 Days Fishing	\$ 7,350*
6 Nights / 5 Days Fishing	\$ 6,450*
5 Nights / 4 Days Fishing	\$ 5,450*
4 Nights / 3 Days Fishing	\$ 4,400*
3 Nights / 2 Days Fishing	\$ 3,450*

* Rates are in USD per person, based on shared occupancy and boat.

SINGLE BOAT: 50% surcharge

NON-ANGLER: \$650 per person per night

INCLUDED

Lodging; all meals and beverages (Open Bar); professional guide service.

NOT INCLUDED

Airfares; Transfer from Corrientes or Resistencia to the hotel; Fishing Licenses (\$100 p/angler); Fishing Loaner Equipment (rods, reels & lines); Gratuities for guides and house staff; In-house laundry service; Any items of a strictly personal nature; Cost of itinerary modifications requested by the passenger.

PAYMENT TERMS

Reservations are confirmed with a 50% deposit. All deposits & payments are 100% non-refundable under any circumstances. Final payment is due 120 days prior to departure. At this point, participants are responsible for total land costs and no refunds will be made for unused land transportation, accommodations, or meals.

OUR OTHER SPORTING DESTINATIONS



Born of passion, backed by ownership.

With more than 30 family-owned, high-end sporting lodges across Argentina, Chile, Uruguay, Mexico & The Bahamas, **The Kautapen Group** brings together a lifetime of experience dedicated to fly fishing, wingshooting, and big-game hunting. Through **Nervous Waters**, **David Denies Bird Hunting**, and **Red Stag Patagonia**, we deliver best-in-class guiding, authentic hospitality, and the consistency that comes only from operating our lodges under our own ownership and uncompromising standards. Each experience reflects our commitment to excellence, conservation, and the values that have guided our family for more than four decades.



NERVOUS WATERS

A Higher Form of Fishing

With 13 signature fly-fishing lodges and counting, Nervous Waters continues to expand into new horizons across Argentina, Chile, The Bahamas, and Mexico. Pursue sea-run browns, wild browns & rainbows, dorado, & other exotic freshwater species as well as the ultimate flats species—bonefish, permit, tarpon, & snook—guided by the most experienced teams in the field. Our lodges offer a level of service on par with the finest boutique hotels of the world, yet each shines with its own personality.



DAVID DENIES

A Higher Form of Wingshooting

Comprising 13 world-class lodges across Argentina & Uruguay, David Denies redefines the art of wingshooting. From high-volume dove and wild pigeon shooting in northern Argentina, to the fertile wetlands of Buenos Aires Province—where marshes and swamps fill with ducks in remarkable numbers—to the rolling pastures of Uruguay, home to the world's greatest concentration of hard-flying perdiz over pointing dogs, we deliver the ultimate wingshooter's paradise. All with a level of style, service, and attention to detail found nowhere else.



RED STAG PATAGONIA

A Higher Form of Hunting

Red Stag Patagonia sets the standard for authentic Big Game hunting in South America. Operating across Argentina and Chile, our carefully curated programs deliver truly wild, fair-chase hunts throughout the breathtaking peaks of Patagonia and the vast Argentine Pampas, targeting free-range red stag, axis deer, blackbuck, fallow deer, and other select game species. Whether you prefer spot-and-stalk, horseback pursuits, or vehicle-assisted outings, we tailor every experience to all skill levels—always providing the finest wild and fair-chase hunting adventures.



BEYOND KARANDÁ LODGE

For those visiting Argentina at any time of year, there's much more to experience with [The Kautapen Group](#) and our sister brands [Nervous Waters Fly Fishing](#), [David Denies Bird Hunting](#) & [Red Stag Patagonia](#)—all sharing the same standard of service, guiding, and hospitality.

A natural complement to Karandá is Pirá Lodge, offering year-round dorado fishing in the Iberá Marshlands. Many anglers choose to combine Karandá (June–December) with Pirá to experience two contrasting fisheries—from the dynamic, structure-rich waters of the Paraná River to the clear marsh channels and shallow lagoons of Iberá.

Karandá also pairs exceptionally well with Suindá Lodge, operating from October through April. Located on the upper Paraná, Suindá offers a different style of fishing, featuring heavy structure, island channels, and outstanding opportunities for dorado, pacú, and pirá pitá.

For a convenient addition, Delta Lodge, just outside Buenos Aires, operates year-round and is ideal as a pre- or post-trip extension. Here, anglers can enjoy dorado and tararira fishing in a unique lowland river system.

In Patagonia, Chime Lodge and Futa Lodge operate from December through April, offering world-class dry fly and streamer fishing for brown and rainbow trout across remote rivers and lakes.

Beyond fishing, David Denies Bird Hunting provides premier wingshooting experiences in Argentina and Uruguay. June and July are peak months for mixed bag hunting, including duck and perdiz, making it easy to combine with a Karandá program. From August through December, dove and pigeon shooting offer another excellent pairing option.

Wherever you choose to go, every destination within The Kautapen Group reflects the same commitment to quality, authenticity, and hospitality that defines the Karandá experience.

THE SPORTSMAN'S SEASONAL CALENDAR

ARGENTINA, CHILE & URUGUAY	JAN	FEB	MAR	APR	MAY	JUN	JUL	AUG	SEP	OCT	NOV	DEC
SEA-RUN BROWN TROUT	• •	• •	• •	•								•
DORADO	• •	• •	• •	• •	• •	• •	• •	• •	• •	• •	• •	• •
TROUT	• •	• •	• •	• •	• •						• •	• •
DOVES	• •	• •	• •	• •	• •	• •	• •	• •	• •	• •	• •	• •
DUCKS					• •	• •	• •	• •	•			
PERDÍZ					• •	• •	• •					
PIGEON				•	• •	• •	• •	• •	• •	•		
BLACKBUCK ANTELOPE					• •	• •	• •	• •	• •	• •	• •	•
AXIS DEER					• •	• •	• •	• •	• •	• •	• •	•
RED STAG			• •	• •	• •	•						
FALLOW DEER			• •	• •	• •	•						
WILD BOAR					• •	• •	• •	• •	• •	• •	• •	•

BAHAMAS	JAN	FEB	MAR	APR	MAY	JUN	JUL	AUG	SEP	OCT	NOV	DEC
BONEFISH	• •	• •	• •	• •	• •	• •	•			• •	• •	• •

MEXICO	JAN	FEB	MAR	APR	MAY	JUN	JUL	AUG	SEP	OCT	NOV	DEC
PERMIT		• •	• •	• •	• •	• •	• •	• •	• •	• •	• •	
TARPON			• •	• •	• •	• •	• •	• •	• •	• •	• •	
SNOOK		• •								• •	• •	

CONTACT INFORMATION

MAIN OFFICE

Santiago Garcia Seeber

santiago@nervouswaters.com

Phone: +5411 4801-1008

Direct from USA: 917-338-7186

Toll Free from USA: 800-530-6928

U.S. PENNSYLVANIA OFFICE

Douglas Larsen

douglas@nervouswaters.com

Phone: 412 855-4838

Toll Free: 866-333-6437

U.S. FLORIDA OFFICE

Anthony J. Caggiano

anthony@nervouswaters.com

Phone: 914 204-0405

UNITED KINGDOM OFFICE

Nick Zoll

nickmonica@nervouswaters.com

Phone: +44 (0) 1485-512046

